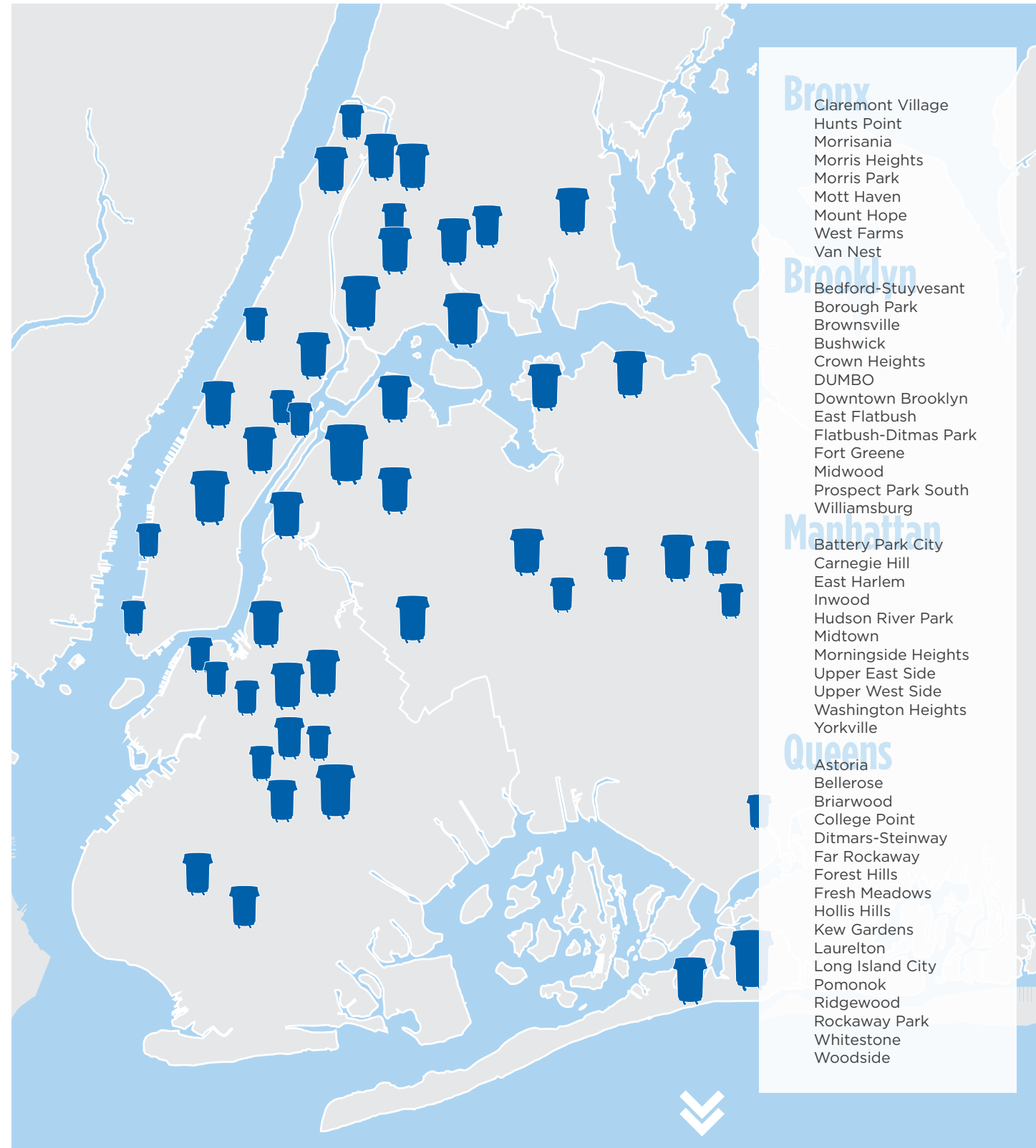


# CLEANING OUR COMMUNITIES

» **170** miles of New York City streets and sidewalks cleaned each day by the “men in blue”



The “men in blue” learn the soft skills of employment, earn a paycheck, and reconnect with their communities, all while improving the quality of life for millions of New Yorkers.

The “men in blue” work with **20 Business Improvement Districts** and **27 Council Members**

## WORK WORKS

PROVING THAT ECONOMIC OPPORTUNITY BREAKS THE CYCLES OF HOMELESSNESS, SUBSTANCE ABUSE, AND INCARCERATION.

—Year in Review—




The Doe Fund

CELEBRATING 30 YEARS of WORK

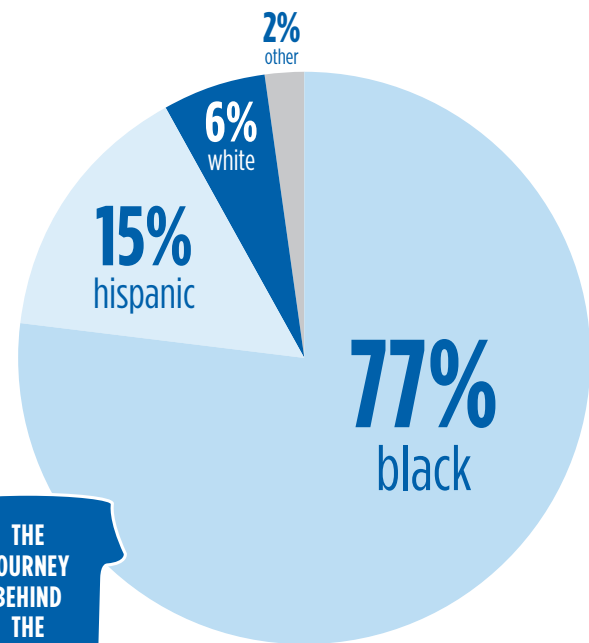
# “MEN IN BLUE” BY THE NUMBERS

It takes work to earn a blue uniform.  
It takes commitment to earn a cap and gown.

2,000+ 

The number of homeless and formerly incarcerated individuals The Doe Fund will help this year

## DEMOGRAPHICS OF THE “MEN IN BLUE”



The Doe Fund’s Ready, Willing & Able program is a nine- to 12-month transitional work program that provides vital services, training, and economic opportunity to those who need it most.

### MONTH 1

#### Orientation

Trainees earn money while working in facilities, begin paying child support, and acquire the basic skills needed to maintain sobriety.

### MONTHS 2-4

#### Soft-Skill Building

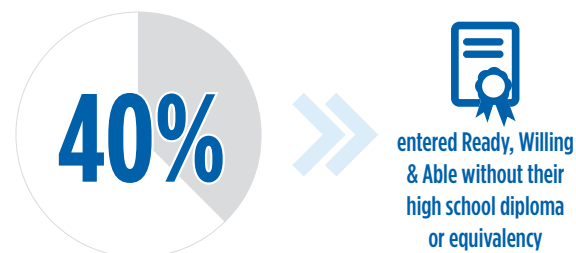
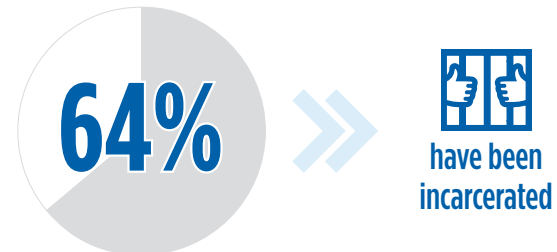
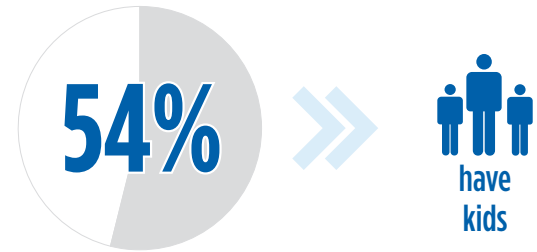
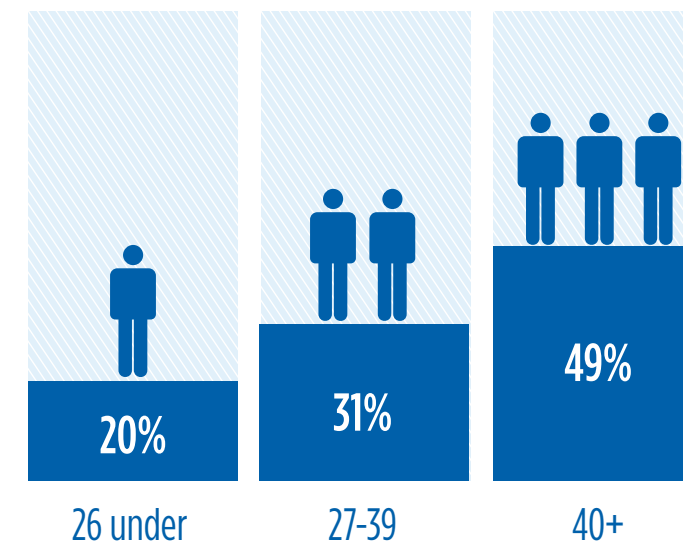
Trainees join the crews of “men in blue,” cleaning New York City streets and sidewalks while learning the soft skills of employment.

## JOB SECTOR BREAKDOWN OF GRADUATES



» **27** Council Members provide support for The Doe Fund and the “men in blue”

## AGE BREAKDOWN OF THE “MEN IN BLUE”

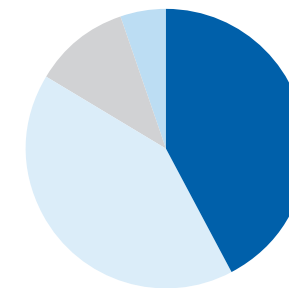


\$10.80 

the average starting wage of graduates

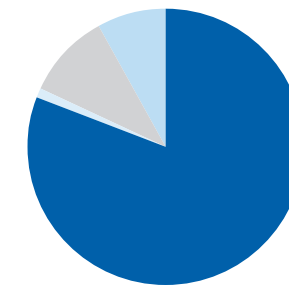
## FISCAL YEAR ENDED JUNE 30, 2014

Total Income	\$	48,451,295
Total Program Service Expense	\$	38,152,081
Residential and social service expenses	\$	19,733,031
Work and training expenses	\$	18,419,050
Total Fundraising Expense	\$	2,295,147
Total Administrative Expense	\$	5,229,565
Total End of Year Net Assets	\$	7,885,125



### BREAKDOWN OF EXPENSES

- Residential & Social Services
- Work & Training
- Administrative
- Fundraising



### BREAKDOWN OF PRIVATE SOURCES

- Individual
- Corporate
- Foundation
- Special Events

### MONTHS 5-9

#### Vocational Training

Six recession-proof, professionally licensed career tracks provide a lifetime of potential income and security for trainees and their families.

### MONTHS 9-12

#### Transition & Graduation

Trainees find and secure full time employment and independent, subsidy-free housing. Graduates receive ongoing support and lifelong career services.

Trainees leave The Doe Fund with the savings, skills, and sobriety they need to reunite with their families, support their children, and become self-sufficient, contributing members of society — for life.

